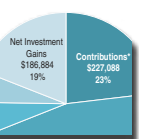




# Report to the Community



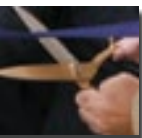
## Table of Contents



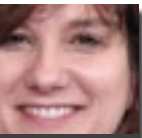
Financial Overview ..... 2



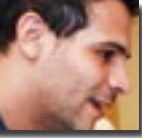
Board of Directors ..... 3



Ribbon Cutting Ceremony ..... 4



Scholarships ..... 5



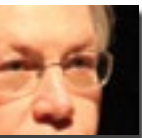
Alumni Affairs ..... 6



An Evening of Fine Wines ..... 7



State of the College ..... 8



Institute for Community Engagement and Outreach ..... 9



Honor Roll ..... 10



Events ..... 12



## An Evening of Fine Wines Celebrates Twenty Years

One of the 44 lots auctioned during the live portion of the 19th annual An Evening of Fine Wines event.

The Manchester Community College Foundation will celebrate the 20<sup>th</sup> annual *An Evening of Fine Wines* on April 27, 2012. Over the years, many people have contributed to the success of *An Evening of Fine Wines*, and it would never have been so successful and enduring without their vision and support.

It started as a casual question in the parking lot from MCC's former Building Maintenance Supervisor Peter Negrola. "Why not hold a wine auction to raise money to support the athletics program at Manchester Community College?" And after 20 years, *An Evening of Fine Wines* has become the premiere wine tasting event in eastern Connecticut.

Since 1992, thousands of guests have attended *An Evening of Fine Wines*, the largest fund-raising event for the college. For months prior to the event, faculty, staff, volunteers and students prepare and plan this gala event that combines a wine tasting and live wine auction with a silent auction of non-wine items to raise funds for scholarships and programs at the college.

One of the major highlights of the live auction is the wine collection of Vincent and Geraldine Lesunaitis of Hamden, CT. MCC accepted this magnificent donation of wines in 1998, which features a collection of rare and exquisite wines from around the world. Lesunaitis is an honorary lifetime member of the International Wine Society of *Les Amis du Vin* and was a member of the American Wine Society, the American Food and Wine Society and the Society of Wine Educators. He also taught wine appreciation through continuing education at MCC and other colleges in Connecticut.

Through the MCC Foundation, *An Evening of Fine Wines* scholarships have benefited thousands of students helping to make their dreams of attaining a college education a reality. Whether supporting first generation college students, students with disabilities or individuals with special financial needs, *An Evening of Fine Wines* helps the MCC Foundation fulfill its goal of ensuring all students with the desire to achieve academically will not be held back by a lack of financial resources.

For more information or to inquire about sponsorship opportunities, call 860-512-2903.

## A Message from the President of MCC Foundation



Your donations always make a difference for our students. Across Connecticut and in the various towns we serve, families and individuals have been directly affected by the economic downturn.

At MCC, we've felt the impact through budget constraints, position eliminations and unprecedented enrollment growth. With your continued help, despite the tremulous environment, we remain dedicated to offering quality services and competitive academic programming for our deserving students.

The 2010-2011 school year marked exceptional activity for the MCC Foundation. We added more than 300 new supporters to the MCC family. That was more new donors last year than the previous four years combined.

We are thankful for the support we received. Our annual fundraiser, *An Evening of Fine Wines* raised more than \$160,000 for scholarships and program support at MCC.

Last year, we awarded nearly \$200,000 in scholarships to more than 300 deserving students. In 2010, we completed our "Case for Support" and will be ready to embark on a capital fundraising campaign in the near future. Through our supporters we will continue to fuel the dreams and aspirations of our students and remain a pillar of excellence in the communities we serve.

Thank you for partnering with us to help students achieve their dreams. Your commitment to Manchester Community College is an integral part in changing the lives of students for the better!

Thank you for being a part of MCC's community of friends and supporters.

Gene Mazur  
President  
Manchester Community College Foundation

## MCC Foundation, Inc. 2011 Budget

Comparative Statement of Activity  
For Years Ended 12/31

Revenues and Support	2011 Budget	Y2010	Y2009	Y2008
Contributions .....	\$690,000	\$677,088*	\$304,025	\$366,268
Special events .....	70,000	61,596	70,381	78,156
Interest and dividends .....	40,000	55,912	43,220	23,424
Net unrealized/realized gains/losses .....	—	186,884	237,402	(412,295)
Net assets released from restrictions .....	—	—	—	—
<b>Total Revenue and Support.....</b>	<b>\$800,000</b>	<b>\$981,480</b>	<b>\$655,028</b>	<b>\$55,553</b>

Expenses	2011 Budget	Y2010	Y2009	Y2008
Student award and scholarships .....	\$200,000	\$177,198	\$108,531	\$117,538
Student and community programs.....	200,000	79,742	88,088	85,271
Special events .....	50,000	40,747	41,231	47,772
Staff development.....	—	—	—	—
<b>Total program expenses.....</b>	<b>\$450,000</b>	<b>\$297,687</b>	<b>\$237,850</b>	<b>\$250,581</b>

Support Services	2011 Budget	Y2010	Y2009	Y2008
Fundraising.....	\$40,000	\$23,321	\$5,364	\$7,265
Management and general.....	60,000	96,633	58,126	61,379
<b>Total support services .....</b>	<b>\$100,000</b>	<b>\$119,954</b>	<b>\$63,490</b>	<b>\$68,644</b>
<b>Total expenses .....</b>	<b>\$550,000</b>	<b>\$417,641</b>	<b>\$301,340</b>	<b>\$319,225</b>

Change in net assets.....	\$250,000	\$563,839	\$353,688	\$(263,672)
Net assets January 1.....	3,344,704	2,780,865	2,427,177	2,690,849
<b>Net assets December 31 .....</b>	<b>\$3,594,704</b>	<b>\$3,344,704</b>	<b>\$2,780,865</b>	<b>\$2,427,177</b>

\* 2010 Contributions include 10-yr/\$500,000 pledge from SBMCF

## Financial Highlights

In 2010-11, more than 700 donors contributed over \$800,000 (contributions and special events) to the MCC Foundation. The MCC Foundation donors and alumni generously increased their level of giving; the Foundation assets increased over \$560,000, from \$2.78 million to \$3.34 million from last year. Additionally, the MCC Foundation also increased its number of new donors by 79 percent. In 2010, MCC received a 10-year \$500,000 pledge from the SBM Charitable Foundation, and the MCC Foundation has over \$3.5 million in assets as of August 31, 2011. Your generosity provided scholarship support, and helped to sustain exciting academic enrichment programs at the college. Your contributions enable MCC to remain both excellent and accessible.

### 2010 MCC Foundation Summary

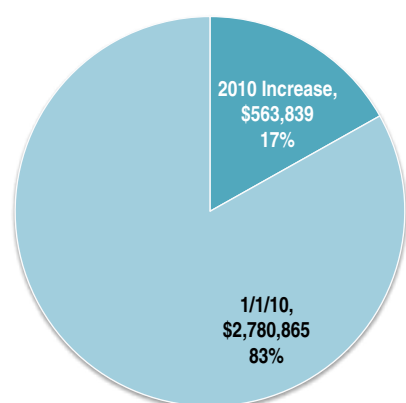
Revenue and Support	\$981,480	(up 49%)
Expenditures	\$417,641	(up 39%)
<b>Increase in Assets</b>	<b>\$563,839</b>	<b>(up 20%)</b>

2010 Revenue	\$981,480	(up 49%)
2010 Contributions:	\$677,088	(up 223%)
SBMCF for Scholarships	\$500,000	(10-yr Pledge)
Hartford Foundation for Public Giving	\$50,000	(scholarships)
Annual Fund Contributions	\$36,952	(up 16%)
New Donors	\$73,487	(up 331%)

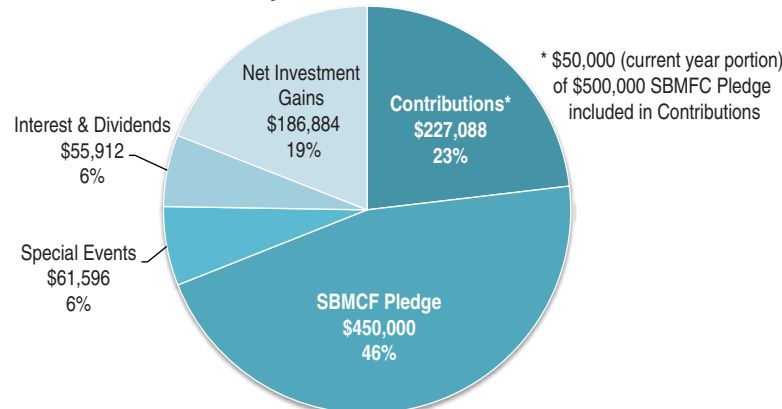
2010 Special Events Revenue:	\$165,000	(up 63%)
2010 Gains and Interest:	\$242,796	(down 15%)

2010 Expenditures:	\$417,641	(up 39%)
Student Awards and Scholarships	\$177,198	(up 63%)
Student and Community Programs	\$79,742	(down 11%)

Foundation Assets: \$3,334,704  
for year ended 12/31/10

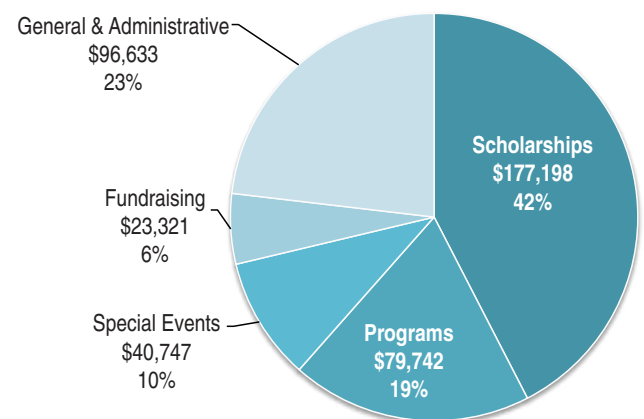


Total Revenue: \$981,480  
for year ended 12/31/10



\* \$50,000 (current year portion) of \$500,000 SBMCF Pledge included in Contributions

Expenses: \$417,641  
for year ended 12/31/10



### Foundation Investment Committee Members:

Craig S. Lappen, Gary D. Lavigne, Michael B. Lynch, Jr., Rosemarie N. Papa

## MCC Foundation Board of Directors

President  
**Gene S. Mazur**

Vice President  
**Craig S. Lappen**  
21<sup>st</sup> Century Financial Advisors

Treasurer  
**Michael B. Lynch, Jr.**  
Lynch Toyota Scion

Secretary  
**Elizabeth W. Benavides**  
Community Volunteer

**Douglas K. Anderson**

**Joseph H. Bednarz**  
AAA Allied Group, Inc.

**Leslie Ann Brown**  
Professor Emerita, Business

**Steve Cassano '68**  
State Senator, 4th District

**Nanette Char**  
Char Consulting

**Frank C. Collins, Jr.**

**Kristen A. Johnson**  
Connecticut Water Company

**Gary D. Lavigne, Esq.**  
Lavigne, Mark & Rogers, LLC

**Glenn Lemaire '74**  
Professor Emeritus, Hospitality  
Management

**Richard P. Meduski**

**Gina Collopy O'Connell**  
The Phoenix Companies, Inc.

**Rosemarie N. Papa**  
Community Volunteer

**James Parry**  
Fuss & O'Neill, Inc.

**Pankaj N. Patel**  
Timken Aerospace Transmissions, LLC

**Terry Provost-Daar**  
ADTI

**Daniel R. Sabia**  
BKM Total Office

**Elizabeth G. Shluger**  
Hartford Marathon Foundation, Inc.

**John Sommers**  
Allied Printing Services, Inc.

**John B. Swanson**  
Gould, Killian & Wynne

**JoAnn Thulin**

**Richard J. Trachimowicz**  
Rockville Bank

**Elizabeth Kelly Treiber**

**Hans Weiss**  
Weiss Gallery

College Representatives

**Gena Glickman**  
President

**Endia DeCordova**  
Acting Associate Dean of  
Institutional Advancement

**Linda J. Burk**  
Professor, Romance  
Languages

**Cynthia Washburne**  
Director of Student Life

**Matthew LaChapelle**  
Student

## Dear Member of the MCC Community,

I am proud to present the 2011 *Report to the Community*. During the past year, Manchester Community College has experienced many exciting milestones but we have also been presented with challenges and constraints that we will continue to face in the year ahead.



As you know, the structure of higher education in Connecticut is moving in a new direction. The legislature recently approved the consolidation of the public higher education system, which eliminates the Boards of Trustees for both the Community College and State University Systems. The historic change also institutes a 19-member Board of Regents of Higher Education that will become the new governing body for all public institutions of higher education except, the University of Connecticut, beginning January 1, 2012.

MCC is not immune to the problems facing community colleges around the country. As the anchors in our communities, we strive to provide access to education, partner with business and industry groups to provide training and support job creation, all while facing unprecedented budget challenges, shrinking resources coupled with increased student enrollment, and a rise in demand for our services.

Despite the challenges, we remain committed to identifying new and innovative ways to offer excellent programs and services for our students and communities. Change is never easy, but with change comes opportunity and we are well-positioned to fully engage our energy and collective talents to ensure the continued success of our new structure.

As you review the *Report to the Community*, please join me in thanking the generous supporters of Manchester Community College. Thank you for your continued support.

Sincerely,

Gena Glickman, Ph.D.  
President

## Board Profile

### Pankaj N. Patel

Mr. Pankaj Patel joined the MCC Foundation Board in January 2010 and has been an invaluable addition. He played an instrumental role in granting the college significant funding crucial to the success of its manufacturing programs. In the last two years, this support has provided the college with \$43,500 for the purchase of software and CNC equipment and to fund a scholarship to the Precision Machining program.

Manufacturing has long been an important part of Mr. Patel's life. In 1992, he joined The Purdy Corporation (now known as Timken Aerospace Transmissions in Manchester) as senior Gear Engineer. He progressed through various managerial levels within the organization to his current position as Plant Manager Manufacturing. With decades of experience in manufacturing, Mr. Patel recognizes the importance of supporting the next generation of manufacturing professionals.

Mr. Patel is a strong supporter of the mission of Manchester Community College to provide quality education and up-to-date career skills. Mr. Patel earned a bachelor of science degree in Mechanical Engineering from Birla Vishvakarma Mahavidyalaya Engineering College of Sardar Patel University in India. He has continued his education at Rensselaer Polytechnic Institute for post-graduate studies in Management, and at New Jersey Institute of Technology for graduate studies in Engineering Management. In May 2011, Mr. Patel was awarded the honorary degree of associate in humane letters, *honoris causa* at Manchester Community College's 47th Commencement ceremony.



## College Names SBM Charitable Foundation Building

Last fall, MCC was honored to name the building housing the Arts, Sciences and Technology Center, the SBM Charitable Foundation Building.

The ceremony was attended by faculty, staff and students from MCC as well as many community supporters and representatives from the SBM Charitable Foundation. Attendees of the event heard remarks from President Glickman and Marc Herzog, chancellor emeritus, as well as MCC Foundation President Gene Mazur and SBM Charitable Foundation President Richard Meduski.

The SBM Charitable Foundation building was named after the Foundation for their continued support of Manchester Community College in the form of scholarships, grants and in-kind contributions in excess of \$1,000,000. Their contributions have helped hundreds of students achieve academic success.

In addition to their continued support, the SBM Charitable Foundation committed \$500,000 over 10 years for student scholarships to the Manchester Community College Foundation. Through the gift, the SBM Charitable Foundation permanently retained the naming rights of the auditorium that is located inside the SBM Charitable Foundation building.



## Foundation Awards More Than 200 Scholarships

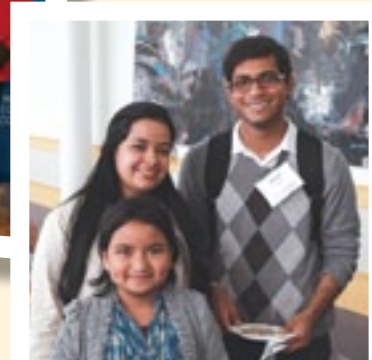
The Manchester Community College Foundation awarded more than 200 students with scholarships for the spring and fall 2011 semesters.

The following organizations and individual scholarships were awarded: Altrusa International, Inc. of Northeastern Connecticut; Mickey Albrizio Scholarship; Gail and Douglas Anderson Scholarship; Gerry and Saul Berkman Scholarship; Ed and Eleanor Coltman Scholarship; *An Evening of Fine Wines* Scholarship; Donna Glickman Memorial Scholarship; Thelma Edith Goldsmith-Valentine Scholarship; Hartford Foundation for Public Giving Scholarship; Manchester Family Dental Scholarship; Manchester Road Race Scholarship; MCC Foundation Scholarship; William J. McGurk Scholarship; Organization of Active Adults Scholarship; William Prince Scholarship; Rockville Bank Foundation Scholarship; Grace and Merrill Rubinow Scholarship; SBM Charitable Foundation Scholarship; Marvin Strickland Scholarship; John and Linda Sutherland Scholarship (funded by the Cheney Family Fund); and Frank Anderson Trapp Scholarship.

This year, new scholarships and/or awards for the following organizations and individuals were created: Dr. George Ducharme Disability Specialist Award; William J. McGurk – Rockville Bank Scholarship; Zora Neale Hurston Anthropology Award; Coreen E. Sumple Scholarship; John Tirinzonie Scholarship; and Eleanor Weseloh Speech-Language Pathology Assistant Award.

## Veterans 5k Run, Walk and Roll Raises More Than \$5,500

Manchester Community College's Veterans O.A.S.I.S. held its first annual 5k Run, Walk and Roll in May. The event raised more than \$5,500 thanks to friends of the MCC community and Phillip Hutchinson, president and CEO of Shoptech in Glastonbury, CT. This fundraising event was developed to help fund the veterans scholarship program at MCC. The money raised will provide scholarships for honorably discharged service members who are ineligible for veteran benefits due to their time of service or duty status. In its inaugural season, the 5K fundraiser drew more than 40 runners who supported the more than 260 military service members who call MCC home.



Mr. Hutchinson and many members of his family including his mother-in-law, Carolyn Costello '93 of Naples, FL drew attention to the event and the importance of supporting veteran's programming at the college. Mr. Hutchinson demonstrated his commitment by matching each dollar raised.

The Veterans O.A.S.I.S. provides a dedicated, supportive space for veterans and military service men and women to network, socialize, study and share, as they integrate into the college experience.

For more information about O.A.S.I.S., contact Ta'Shema Odoms at 860-512-3307.

## Donor Profile



### John Tirinzonie Scholarship

The John Tirinzonie Scholarship has been established by Janice Tirinzonie, friends and family at Manchester Community College to honor a deserving student who has excelled in the study of economics.

Mr. Tirinzonie attended East Catholic High School and graduated from CCSU in 1974, majoring in psychology and economics. He later attended the University of Hartford for his graduate work. Mr. Tirinzonie worked 33 years for the Connecticut Department of Labor and was Director of Job Development and State Labor Economist. In these positions he provided detailed analysis on the current economic situation in Connecticut and was also responsible for developing occupational and industrial forecasting data.

In his position as State Labor Economist, he was often asked to provide guidance and insight into Connecticut's economy for Governor M. Jodi Rell. He was asked by the Governor to serve on the

Council of Economic Advisors, and was also the chair of the CT Learns and Works committee, a coordinated effort among the Departments of Labor, Education and Higher Education to promote the link between education and employment. Mr. Tirinzonie also successfully managed the Labor Department's Job and Career Fairs, which are held throughout the state.

Mr. Tirinzonie was a member of the Hartford Springfield Economic Partnership (HSEP), and served on the planning committee for the annual College Career Expo produced by HSEP. Beside his committee work, he was a trainer and guest speaker for state, regional and national groups involved in workforce and career development. He made numerous presentations on the economy to national and international groups and was actively involved with state and career development and planning. Recently MCC has partnered with Janice Tirinzonie and the John Tirinzonie Scholarship to host the annual Regional Economic Summit, which will be held in January at MCC.

## Student Profile

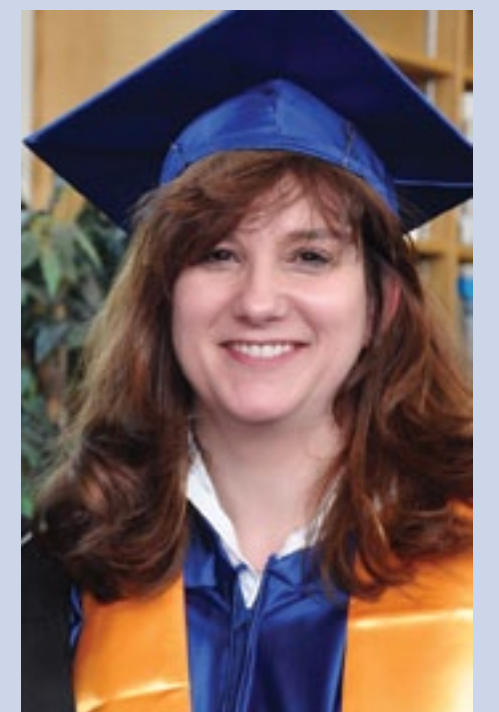
### Joy Thompson '11, Scholarship Recipient

Joy Thompson began her journey at Manchester Community College in Fall 2009. Older than most students and with more life responsibilities—including juggling schoolwork and single motherhood, Joy found it hard to find her place on campus until she registered for Dr. Andrew Paterna's "Health and Wellness" class, the one course she says changed the direction and purpose of her life.

Required to complete ten hours of community service work during the course, Joy learned that her passion and purpose was volunteer work. Joy has since worked with groups such as the MCC Community Garden and Farmer's Market, the Manchester Area Council of Churches and others.

Joy believes that she would not have become the person she is today if it was not for the support and guidance provided by the MCC community. In addition, the financial support of the SBM Charitable Foundation scholarship, awarded by the MCC Foundation, made it possible for her to continue her education when she could not afford to do so herself.

Though her time at MCC is over, what she has learned from the experiences at MCC will stay with her as she takes this new-found knowledge to complete her undergraduate education at Eastern Connecticut State University and Charter Oak State College. Once she completes her bachelor's degree, she plans on pursuing a master's degree in Health and Wellness Promotion at Springfield College.



## Alumni Affairs Highlights

### Alumni Update

The MCC Alumni Association has merged with the MCC Foundation and has been officially renamed MCC Alumni Affairs. The merger, which took place in the spring, will create more resources for alumni outreach and engagement. As part of the merger, a plan was developed to take a closer look into how MCC can actively communicate with and engage alumni.



In addition to offering networking events, including the Annual Homecoming Dinner and MCC Alumni Night at the New Britain Rock Cats game, the MCC Alumni Affairs office has encouraged the use of technology and social media in an effort to stay connected with alumni. If you have ideas or are interested in working with the MCC Alumni Affairs office, contact Sara Vincent at 860-512-2909 or email svincent@mcc.comnet.edu

### Top Chef Returns To MCC

MCC's Alumni Affairs office continues to engage MCC's most distinguished alumni, including Angelo Sosa '97 from Bravo's hit reality T.V. show, "Top Chef." Sosa, who returned to campus for the first time in nearly a decade, spent the day working with culinary arts



students to prepare for the fundraising dinner that was held in his honor. During his visit, Sosa's love for the kitchen was coupled with his astonishment with MCC's transformation over the past decade.

Guests who attended the dinner were treated to a gourmet meal prepared by Chef Sosa and the culinary arts students. During the dinner, Sosa shared his journey to culinary stardom and discussed the important impact MCC had on his career. "The college played a big role in my culinary success. I will always be connected to MCC," stated Sosa. Angelo's most recent project is Social Eatz where he is executive chef and owner, designing a menu that reinterprets NYC staples with flavors from across Asia.

### Carrying on a Tradition: Class Gift 2011

Students who graduated in 2011 were asked to contribute \$20.11 to the 2011 Class Gift Campaign to commemorate their graduation year. While the campaign continues through December, we are happy to report that donations continue to come in. If you are interested in supporting the 2011 Class Gift campaign, visit [www.mcc.comnet.edu/gift](http://www.mcc.comnet.edu/gift).



### Alumni Homecoming Dinner

More than 50 alumni and friends attended the annual Alumni Homecoming Dinner. Guests were treated to an evening of great food and music. The dinner showcased the skills of the students in the Hospitality Management and Culinary Arts programs. The Alumni Homecoming Dinner is held each year on the Monday prior to Thanksgiving. This year, the dinner will be held on Monday, November 21. For more information, contact Sara Vincent at 860-512-2909.

### Stay Connected

If you'd like to stay up-to-date with alumni news, make sure to check us out on Facebook or visit us on the web at [mcc.comnet.edu/alumni](http://mcc.comnet.edu/alumni).



Remember to continue to share your accomplishments and celebrations with MCC Alumni Affairs at [alumni@mcc.comnet.edu](mailto:alumni@mcc.comnet.edu) or by calling Sara Vincent at 860-512-2909.

## Celebrating a Record-Breaking Year

The 19th annual *An Evening of Fine Wines* was held on Friday, April 1. This year's honorary chair was Robert M. Annon, Jr., Regional President Hartford/Springfield, Webster Bank. The gala evening featured wine tastings as well as silent and live auctions to raise funds for scholarships and program enhancements. This year, the event raised a record-breaking amount of \$160,000 to benefit scholarships and programs at Manchester Community College.

There were several new features this year including Hotel California Tequila tasting station, Brioni's Premium Coffee, a cooking demonstration by Chef Christian of Fleming's Prime Steakhouse & Wine Bar, and an appearance by Ryan Hanrahan from NBC Connecticut. Thanks to all the donors, volunteers, guests and students who helped make this event the most successful yet.



## Alumni Profile



### Angelo Sosa '97 Chef, Consultant & Restaurant Owner

Angelo Sosa '97 is best known for his role as a "chefestant" on Bravo's hit reality T.V. shows, "Top Chef" and "Top Chef: All-stars." Long before reality T.V. propelled him to culinary stardom, Sosa was making a name for himself on the culinary circuit. Sosa knew he loved to cook, but he didn't always know that he would be able to make a career out of it.

When it came time to enroll in college, Sosa, a Durham native, enrolled in the Culinary Arts program at Manchester Community College to ensure that he was choosing the correct career path for himself. After completing his degree requirements and fueling his self-described fire for the culinary world, Sosa enrolled at the Culinary Institute of America, from which he graduated with honors.

Since his collegiate career ended, Mr. Sosa has been taking the culinary world by storm. He

has worked with some of the world's most widely respected chefs, including Christian Bertrand and Jean-Georges Vongerichten, while also working in the best restaurants across the globe including Acqua, the Ocean Club at Dune restaurant, and Spice Market.

While Mr. Sosa's culinary record is impressive what may be more impressive are his consulting and entrepreneur accomplishments. Mr. Sosa has consulted with restaurants including Stephen Starr's Buddakan, Asian-Mediterranean hot-spot LOFT, Morimoto, Alain Ducasse's Spoon Food & Wine in Paris among others. In addition to consulting, Mr. Sosa adds restaurant owner to his resume. In his short time on the New York restaurant scene, Sosa has owned two restaurants including his latest endeavor, Social Eatz, an upscale, casual restaurant serving up what he calls "New York staples with an Asian flare."

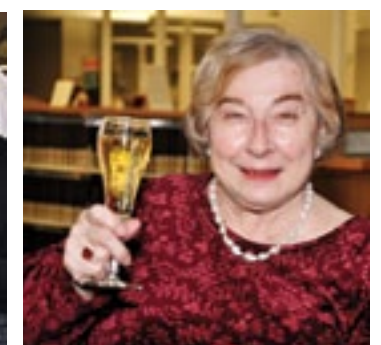
SAVE THE DATE!  
The 20th Annual

AN EVENING OF  
FINE WINES

Friday, April 27, 2012

For information on tickets, or to make a donation to the event, please call 860-512-2905.

We look forward to sharing a wonderful event with you again in 2012.



Top: Robert M. Annon, Jr. and Diana Annon; Timothy J. Devanney, President Gena Glickman and Congressman John B. Larson; first row from left: guests enjoying the wine tasting; William J. McGurk, Kevin Murphy, President Gena Glickman, State Senator Steve Cassano '68; Chef Christian Schunmann and Edward Ferreira; second row left to right: Ryan Hanrahan; live auction; Lucy Hurston '93 and Sydney Halsall; third row left to right: Jean and Richard Meduski, David and Leslie Ann Brown, and Martin Hart; hors d'oeuvres prepared by MCC culinary arts students; Dianne and Richard Trachimowicz; bottom right: Rosemarie and John Papa, Barbara and Gene Mazur; last row: guests enjoying the wine tasting; Geraldine W. Lesunaitis.



## College Undertakes Educational and Facilities Master Plans

Manchester Community College has partnered with Paulien & Associates Inc., headquartered in Denver, Colorado, to develop a comprehensive Educational Master Plan, including a Facilities Master Plan, that will provide a guideline for the college's planning efforts over the next ten years.

Paulien & Associates, Inc. provides consulting services including master planning, strategic planning and projections for future enrollment demands. The firm specializes in analyzing facility requirements and conducting academic space needs assessments, performing space reallocation studies, providing classroom and laboratory utilization studies, and preparing pre-architectural facilities program plans. Since its founding in 1979, Paulien & Associates, Inc. has provided consulting services to higher education institutions, architectural and educational planning firms and governmental entities. The firm has worked at over

425 college and university campuses in 41 states and the District of Columbia.

In order to provide MCC with the full range of services sought for the Educational Master Plan, Paulien & Associates has teamed with JJR, a member of the SmithGroup. Together these firms have been providing blended planning services for higher education for more than a decade.

Paulien & Associates worked with key stakeholders at MCC, including the president, the deans, and steering committee to develop a comprehensive educational and facilities master plan. Faculty, staff, students and community members played an important role in providing feedback throughout the planning process. The plan was completed in September 2011.

The planning process was broken down into the following two phases:

### Educational Master Plan:

- ▶ **Task 1:** Project Initiation/Fact-finding and Kickoff Meetings
- ▶ **Task 2:** Environmental Scanning/Internal Analysis and Work Sessions with key leaders (individuals who are experts in their areas at MCC)
- ▶ **Task 3:** Review Internal/External Analysis and Strategic Work Session
- ▶ **Task 4:** Outcome Documentation—Futures of MCC and Financial Plan
- ▶ **Task 5:** Comment and Review and Final Educational Master Plan

### Facilities Master Plan:

- ▶ **Task 6:** Utilization and Space Needs Analysis and Campus Work Sessions
- ▶ **Task 7:** Exploration of Alternatives and Work Sessions
- ▶ **Task 8:** Final Facilities Master Plan and Report and Formal Presentations

## MCC's Institute for Community Engagement and Outreach

The college engages in partnerships with the fifteen communities surrounding its campus and beyond by offering and responding to requests for education, human services, training, programming, service projects and technical assistance designed to enrich the civic and cultural lives of area residents. The college actively partners with businesses and community organizations in order to better understand the needs of our constituents, to remain current in our offerings, and to link ourselves to the communities we serve. The Institute for Community Engagement and Outreach consists of four centers, including: Public Policy and Service, Business and Economic Development, Community Partnerships and Educational Partnerships.



### MCC Partners with Kettering Foundation

MCC's Institute for Community Engagement and Outreach was selected to participate in a national learning exchange with the Kettering Foundation. The program, entitled "Centers for Public Life: Bringing New Organizations into Deliberative Practice," gave the Institute the opportunity to take a closer look into understanding the practice and challenges of engaging in public life. Kettering has a long history of working with organizations around the country that are trying to build a more deliberative culture and a more public form of politics.

MCC was selected from among hundreds of colleges and organizations across the country to work as part of a nationwide group of nonpartisan organizations that will conduct discussions about important national issues. The Institute decided to research the issue of high school drop-outs and their impact on our community. A community forum to take a closer look at the issue will be held in the fall.

### Annual Regional Economic Summit Held

Manchester Community College's Institute for Community Engagement and Outreach, in collaboration with Asnuntuck, Capital and Tunxis Community Colleges, hosted the Regional Economic and Community College Summit, which drew more than 200 individuals to Manchester Community College. The summit brought leaders from small and large businesses, local and state governments, the community and higher education together to discuss the critical partnership role of Connecticut's community colleges in regional business development and economic growth.

The speakers, including Lt. Governor Nancy Wyman, American Association of Community Colleges Senior Vice President of Government Relations and Research David S. Baime and *The Con-*



### MCC's Institute for Community Engagement and Outreach Partners with UConn's Master of Public Administration Program

MCC's Institute for Community Engagement and Outreach recently had the opportunity to partner with the University of Connecticut's Master of Public Administration Capstone Program. The partnership allowed students, who were seeking their master's degree in Public Administration, to develop and evaluate the Institute's work.

Over the course of the partnership, students performed a number of tasks such as:

- Researched best practices in community engagement focusing on community colleges.
- Gathered input from the advisory committee and external constituencies to clarify the vision and mission of the Institute.
- Conducted interviews with key stakeholders, evaluated feedback and provided recommendations.



- Provided recommendations for an internal communication structure.
- Provided recommendations for how to build and sustain relationships with different community groups and stakeholders.
- Assisted with the planning and hosting of community and business roundtable discussions.

The partnership resulted in a presentation of findings to the Institute and President Glickman. A final report of the research is available at <http://www.mcc.comnet.edu/engage/research.php>.

## Grants Update

MCC received the following grants to support academic programs and college initiatives for the 2010-2011 academic year:

- A \$40,000 grant was received from the National Center for Academic Transformation for implementation of the math redesign project.
- A \$10,000 grant from a private donor within the Hartford Foundation for Public Giving was awarded to the college for college readiness work in English with Great Path Academy.
- More than \$120,000 was allocated to the Speech Language Pathology Assistant program through two consecutive two-year grants by the State Department of Education.
- Pratt and Whitney awarded the college a \$3,000 grant for the Diversity Day program held in April.

In collaboration with other organizations, MCC received the following grants:

- In partnership with East of the River Action for Substance Abuse Elimination (ERASE), the college received a Connecticut Healthy Campus Initiative Grant from the Department of Mental Health and Addiction Services in the amount of \$22,000. The grant funding allows MCC and ERASE to conduct a research study on the impact of alcohol use on the student population as well as workshops on reducing alcohol abuse.
- MCC received \$28,000 as part of the FIPSE grant that was awarded for two years. The funds will be used for on-line student support.
- In collaboration with the community college system office, MCC continues the SOAR grant—a three-year grant ending in 2012 from which MCC will receive more than \$90,000.



From left to right: mediator Gary D. LeBeau, and panelists Dr. Cathryn Addy, Colin Cooper, Peter M. Gioia, Theresa Janeczek, Peter J. Karl, Thomas Phillips, Craig Stevenson, and Richard J. Trachimowicz.

necticut Economy Executive Editor Steven Lanza spoke about the importance of the community college's role in growing the economy. The summit worked to foster and promote conversations that lead to stronger partnerships in creating jobs and work readiness. Attendees also had the opportunity to have their questions answered by a panel of representatives from higher edu-

cation and the business communities.

Hosted by MCC's Institute for Community Engagement and Outreach and sponsored by the John Tirinzonie Scholarship and Rockville Bank, the second Regional Economic Summit will be held on Friday, January 13, 2012.

## Honor Roll of Donors

During the past year, the following made gifts to support the students and programs at MCC.  
Their support is critical to the college's success.

#### Lowé's Benefactor Society (Gifts of \$10,000+)

BKM Total Office  
Adolf and Virginia Dehn Foundation  
Hartford Foundation for Public Giving  
Richard and Jean Meduski  
SBM Charitable Foundation, Inc.  
Janice Tirinzonie & family  
Webster Bank

#### The 1963 Society (Gifts of \$5,000-\$9,999)

Douglas and Gail Anderson  
Brioni's Ultra Premium Coffee  
Thomas L. Cheney  
Edward Coltman  
Cox Media  
EPS Printing II, LLC  
Geraldine W. Lesunaitis  
Lynch Toyota Scion  
Gene and Barbara Mazur  
Pratt & Whitney

#### The Tower Patron Club (Gifts of \$1,000-\$4,999)

AAA Hartford/Cincinnati Ability Beyond Disability Aetna  
Allied Printing Services, Inc.  
American Eagle Federal Credit Union  
Beverly Hills Limousine  
Blum Shapiro  
Bricco Restaurant, Grants Restaurant and Bricco Trattoria  
David and Leslie Ann Brown  
Carla's Pasta, Inc.  
Tris J. and Angelee D. Carta  
Cavey's Restaurant  
C. Perry and Debra N. Chilberg  
Frank C. Collins Jr. and Celia Collins  
Comcast Business Class  
Connecticut Water Company  
Carolyn Costello  
Arthur and Carol Cunliffe  
Eastern CT Health Network  
First Hartford Realty Corporation  
Robert H. Fish  
Fleming's Prime Steakhouse & Wine Bar  
Fuss & O'Neill, Inc.  
General Reinsurance Corporation  
Susan Gibbins  
Gena Glickman  
Marvin Glickman  
The Hartford Courant  
Highland Park Market  
Hoffman Auto Group  
Hurst Research, LLC  
ING  
Ittybits Catering and Personal Chef Service  
J.H. Cohn, LLP

Jacobs, Walker, Rice & Basche, LLC  
JNB & Associates  
Kaman Corporation  
Peter J. and Donna Karl  
Kelsor Corporation  
Craig S. and Sandra Lappen  
Lavigne, Mark & Rogers, LLC  
Glenn '74 and Anastasia Lemaire  
Manchester Family Dental  
Manchester Honda  
Manchester Road Race Committee, Inc.  
William J. and Mary McGurk  
NewAlliance Bank  
Stephen O'Connell and Gina Collopy O'Connell  
Omni Comics and Cards  
Organization of Active Adults  
John and Rosemarie Papa  
E. Craig and Ivy-Lynn Patapas  
Barbara Place  
Premier Limousine  
Putnam Plaza Super Liquors  
Reid and Riege, P.C.  
Rockville Bank  
Foundation  
RSL Fiber Systems  
Saint Francis Hospital & Medical Center  
Shoptech  
The Stop & Shop  
Supermarket Company LLC  
Edward L. Trapp  
Travelers Championship  
The Travelers Companies, Inc.  
Thomas and Elizabeth K. Treiber  
Village Spirits and Occasion Place  
Wal-Mart  
The Weiss Gallery, Studio & Zipser Museum  
Willis North America Inc.  
Winvian  
James M. and Dianne B. Mann

#### The Deans' Circle (Gifts of \$500-\$999)

American Academy of Chefs  
Robert M. Annon, Jr. and Diana Annon  
Carlos G. and Elizabeth W. Benavides  
Peter S. and Elizabeth Brzezicki  
Buckland Ear, Nose & Throat  
Carter Chevrolet Co., Inc.  
Stephen T. '68 and Hollis U. Cassano  
Tom Chmielewski and Joanne Britton  
Coca-Cola Bottling of New England  
Bradford W. Davis  
Michael DiRaimo  
Dotcom Wine & Spirits  
Mark and Alison Eagleson  
Holly Foetsch '91  
Eileen M. Furey and Shirley Boron  
Helena S. Gorski  
Ed Hicks

Marcia Jehnings  
Mitchel and Judith Kallet  
Kelly Services  
Albert J. Kerkin, Jr.  
Davender Khokhar  
Kelsor Corporation  
Little Deboo Productions  
Manchester Ice & Fuel  
James McDowell  
Lillian Ortiz  
Savings Institute Bank & Trust Company  
Florence Sheils '93  
P. Warren Sieber  
Spentless Discount Liquors  
Rae Strickland '77  
Robert and JoAnn Thulin  
Updike, Kelly & Spellacy, P.C.

#### Cougar Fellows (Gifts of \$250-\$499)

Carla Adams  
Allez Catering  
Arthur Murray Dance Studio  
Elizabeth Beyrer '99  
Blue Heron Fine Wines & Spirits, Inc.  
Georgia Buckles  
Patricia M. Carrigan  
Jorge L. and Barbara Cervera  
Stephanie H. Davis  
Carol Delaney  
Mariana DiRaimo  
Fiduciary Investment Advisors  
Eamon and Sheila Flanagan  
John V. '86 and Mary Gannon  
Peter H. Grose  
G. Duncan Harris  
Herb's Sport Shop  
I.C.E. Internet Radio at MCC  
Robert Kagan  
Dorothy A. Kaminski '86  
Kenneth Klucznik  
Nancy Lentocha '94  
Les Amis D. Escoffier Society - Connecticut Chapter  
Lessing's Food Service Management  
Levy & Droney, P.C.  
Michael B. Lynch, Jr. and Brenda K. Lynch  
Margaret Moriarty '76  
Paul Ofria  
The Olde Burnside Brewing Co.  
Derek and Heather Pasterick  
William M. and Nancy E. Plankey  
Plantations, Inc.  
Charles A. and Susan Plese  
Ivette Rivera-Dreyer  
Nicola Rubinow  
Saint Luke Church  
Catherine Seaver  
Sheraton Bradley International Airport Hotel  
Ernest Smith  
Carl J. Stafford '86  
Steelcase, Inc.  
Charlene Tappan  
Donna Waldron  
Winnapaug Country Club  
Yes Cleaners  
Paul Zotos

#### Friend of MCC (Gifts up to \$249)

Rosa Abarzua  
Leslie A. Alexander  
All in its Place, LLC  
Robert W. Allen  
Anthony Amador  
American Legion Auxiliary  
Andre Furniture Industries, LLC  
Angelo's on Main Rockledge  
Anne Miller Real Estate  
Dorothy A. Annulli  
Noreen Arao  
Bryan Artiaco  
Lynda A. Asiedu '89  
David D. Auferin  
Leonard Auster '93  
Jody Bailey  
Laraine Z. Baker '85  
Paul Ballasy '87  
Philip C. Bannock  
Trent J. Barber  
Carol A. Barno '86  
Thomas P. Barrett  
Michael A. Bars  
Susan M. Barzottini  
Colleen Bates  
Donna D. Battalino '91  
Joseph H. Bednarz  
Anne L. Beechler  
Alice C. Belden  
Eva Benson '87  
Barbara Bernacki  
Marcia Biase '93  
Bicycle South Windsor  
The Bike Shop  
The Bill Fisher Enterprise, Inc.  
John A. Blanchette '85  
Norman C. Blanchette  
Blue Point Brewing Company  
Bob's Discount Furniture Charitable Foundation, Inc.  
Selden L. Bogli  
Terry Bogli  
Ann Bonney  
Doris C. Bourque '80  
Wynne M. Bovia  
Craig R. Bowman '96  
Robert Bowsza  
Brabo International, LLC  
Judy Braese '89  
William Breslau  
Eileen Brogan  
Gregg Brohinsky  
Lois V. Bromson  
Michael W. Brosnan '10  
Boyd P. Brown, III  
Shelby J. Brown  
Eleanor Browne  
Herbert R. Bucklin, Jr.  
Helene F. Buker  
Bumblebeads  
Bonnie S. Bunce '88  
Linda J. Burk  
Diane P. Burke '06  
Kevin Burke '94  
Ray Burrington  
Pasquale Cafro  
David M. Call  
ZueJay Campos '09  
Carbone's Ristorante  
Joan Carboni  
Keith R. Carlough  
Barbara T. Carlson  
Elise K. Carlton  
Albert W. Carmienke '71  
Rich Carpenter  
Cecilia Carta '92

Erin Carter  
Marc B. Cascadden  
Karyn M. Case '95  
Kenneth Cassella  
Laura F. Cassidento  
Central Connecticut Holdings LLC  
Douglas Chaffin  
Michelle Chahoud  
Alain S. Champagne  
Nanette Char  
Ernestine Charbonneau  
Joao Fernandes '99  
Regina Ferrante  
Cheryl Gross & Associates  
The Children's Museum  
Children's Museum of Southeastern Connecticut  
Evelyn V. Clark '94  
Beth Coccia '96  
Thomas A. Coco '88 '92  
Maidie Cohen '05  
Lois A. Coleman  
Alicia Colón  
Deborah Colucci  
Matthew A. Combe '10  
Communitas, Inc.  
Connecticut Science Center  
Connecticut's Beardsley Zoo  
Troy Copeland  
Gail Coppage  
Nancy Cordes '84  
Marie W. Cornelio  
Nicole M. Cornell  
Diane M. Crawford  
Tully Cross  
John R. Crowley  
Don and Melody A. Currey  
June Curtis  
Carol D. Cyr '93  
Teresa A. Daley '96  
William Darby  
Diahann Darwood  
Janet B. Davidson  
Caitlin Davies  
Linus Deasy  
Endia DeCordova  
Nancy R. DeCrescenzo  
Harold and Ronalee '02  
Delisle  
Winnie DeLong  
Patricia DeLoy  
Laura M. Hall  
James A. Hall  
Laura M. Hall  
Joan D. Hamilton  
Bruce Hamstra  
Marilyn Haney  
Paula Hankard '79  
Hareloms Designs  
Francine Harris  
Timothy J. and Mary Pat DeVaney  
Thomas E. Devivo '82  
Linda Devlin  
Olivia Diamond  
Diana, Conti & Tunila LLP  
Howard B. Dickie  
Ellen P. Digan  
Linda Diggins-Domina  
Carol S. Director  
Disabled American Veterans  
Adler M. Dobkin  
Stephen Dombrowski  
Alexis R. Donald '97  
Douglas Donaldson  
Joy Dorin  
Craig A. Doucette '96 '04  
Joanne F. Dougherty '89  
Doreen Downham  
Kathleen Doyle  
David A. Dreselly  
Nadel Drissi  
Deborah R. Dube

Gail A. Dunnrowicz  
Natalie Durant  
Deborah R. Durgin  
Dzen Realty, Inc.  
East Hartford Raquet Club  
Franklin W. Eichacker  
Leon W. Elmore  
Alton R. Esson  
Facility Engineering & Management LLC  
Donald W. Fahr '90 '96 '01  
Sherri Farr  
Brigitte Fedor '89  
Laura S. Feeney  
Joao Fernandes '99  
Regina Ferrante  
Beverly B. Ferrigno  
Raquel Fialkoff  
Kaarina B. Finegan  
Sharon A. Flebeau  
David E. Flynn '89 '90  
Follett Bookstore at MCC  
Glennora G. Forbes  
Barbara Fox  
Susan A. Fracasso '96  
Erika Fran  
Frank's Auto Credit  
Robert W. Fritsch II  
Verna S. Fuerth  
Elizabeth S. Gagliano  
Richard Gallant '94  
David W. Gay  
Brenda C. Geitz '10  
Nina M. Gentile  
Diane Geschimsky  
Margaret S. Geyer  
Mary E. Gibbs  
Robin A. Gibson  
Tressa Giordano  
Nicole C. Gómez  
Samantha González  
Jennifer H. Gorra  
Kathleen Gorritti  
Michael Gosselin  
Nicole Graboski  
Barry Grant  
Sean Grant  
Carrie Lee Gray  
Great Harvest Bread Company  
Eileen Griffin  
Richard Grimaldi  
Edward F. Grzes '87  
Carole S. Guttman  
Melanie J. Haber  
James A. Hall  
Laura M. Hall  
Joan D. Hamilton  
Bruce Hamstra  
Marilyn Haney  
Paula Hankard '79  
Hareloms Designs  
Francine Harris  
Timothy J. and Mary Pat DeVaney  
Thomas E. Devivo '82  
Linda Devlin  
Olivia Diamond  
Diana, Conti & Tunila LLP  
Howard B. Dickie  
Ellen P. Digan  
Linda Diggins-Domina  
Carol S. Director  
Disabled American Veterans  
Adler M. Dobkin  
Stephen Dombrowski  
Alexis R. Donald '97  
Douglas Donaldson  
Joy Dorin  
Craig A. Doucette '96 '04  
Joanne F. Dougherty '89  
Doreen Downham  
Kathleen Doyle  
David A. Dreselly  
Nadel Drissi  
Deborah R. Dube

The mission of the MCC Foundation is to fund scholarships in order to provide students access to college programs; support extracurricular and athletic activities that contribute to a sense of college community; fund the purchase of equipment that enables college programs to expand beyond a core level of operations; and build a network of community support in MCC's service area.

## Honor Roll of Donors

Anthony Howard  
Randolph F. Howell  
Steven Hudak  
Alison Hunt  
Georgette E. Hyman  
Marigrace Inzero  
Wally Irish  
Barbara Ivers  
Sonia T. Ives '92  
Rachel Jackson  
Joan A. Jakiela  
Daniel Janczak  
Sandra Jenkins  
Frank Jodaitis  
Cedric Johnson  
Kristina Johnson  
Logan L. Johnson '09  
Philip Jones  
Jones Winery  
Jorgensen Center for the Performing Arts  
Joanne Kaplita  
Kathleen A. Keena  
Terry H. Keib '92  
Patricia A. Keith '86  
Kelleher Landscaping  
Judith R. Kelly  
Tina S. Kelly  
Joan D. Kelsey  
Deborah S. Kenniston  
Jerrid Kidd  
Valerie Kier  
Diane L. Kiraly  
John A. Kiraly  
Evelyn Kissi  
Maura Kjar  
Grazyna Kolodziejczak  
David J. Komorowski '99  
Maciej Kostecki '99  
Mildred I. Kostuik '86  
Timothy J. Kraus  
Chelsea Kunzli  
Christine E. Kurpiewski  
Wilmary Labonte  
Keith Lapenta  
Nancy LaRoche-Shovak  
Christine Larson '02  
Law Offices of Leighton, Katz & Drapeau  
Jean-Paul LeBlanc  
Raymond H. Lefurge, Jr.  
Peggy A. Leggett  
Robert and Ann Letendre  
Audrey Letizia  
Payne A. Lewis '10  
Joan A. Lewis  
Lorry Lima  
Patricia O. Lindo '05  
Mary A. Lipira '00  
James Loersch  
Catherine R. Logiudice  
Long Trail Brewing Co.  
Hollace P. Lorch  
Justin P. Lord  
John T. Lorenc '92  
Lois A. Luddy  
Takiya Lugo  
Ann M. Lynam '88  
Kenneth J. MacDonald  
John R. Madsen-Bibeau  
Constantina Magno '89  
Kevin R. Maher  
Janina Mahler  
The Main Pub Restaurant, Inc.  
Manchester Country Club  
Manchester Hardware  
Darlene Mancini-Brown  
The Maritime Aquarium  
Lynn A. Maschi  
Tyler Maselek

Fayette J. Mathis  
Gloria E. Matthews  
Christine C. McCooe  
Donna McCormac-Condon  
Wayne P. McCormack  
Jean McCoy  
Katelyn McCoy  
Ann P. McGurk  
Erin A. McGurk  
R. Dianne McHutchison  
Lisa McNeely '93  
Kerry J. McNiven '03  
Judith Melocowsky  
Metro Bis  
Dolores Michna '86  
Earl Middleton, Jr.  
Mill On The River  
Miller Recycling Corp.  
Tanya Millner-Harlee  
Sharon Mills '96  
Joseph P. Mistretta  
Pamela Mitchell-Crump  
Donna Mlodzinski  
Suellen M. Molstad '04  
Nancy C. Moon  
Scott Moore  
Steven V. Moore  
Donna Morelli  
Marilyn Moriarty  
Brent D. Morris '94  
Elizabeth C. Morris  
Jonathan Morris  
Gladstone M. Moses  
Jacqueline A. Mullen '86  
Munson's Chocolates  
Alan Murray  
Janis K. Murtha  
Charles Musick  
Mystic Seaport  
Geoffrey Naab  
Vidya Nair '94  
Dominic Nanci '95  
Barbara G. Natale  
Lisa Nesbitt '99  
New Britain Rock Cats  
New England Air Museum  
Margaret A. Newton  
Donna Nicotera  
David J. Nielsen  
Nikitas  
Janet Nolan  
James E. Noonan '91  
Jon L. Norris  
Arlene Nowik  
Carl Ochnio  
Maura O'Connor  
Thomas F. O'Connor  
Kate M. Oggel  
Maureen W. Ogrian  
Myrna J. Oney '06  
Brian Orenstein  
Ornamental Rogues, June Curtis & Doc  
Oxford Liquors  
Ralph Pandolfi Jr.  
Christopher A. Pape '86  
Lynne Parr  
Ezzio C. Partesano  
Sebastiano Patania '72  
Birgitte Patel  
Pankaj N. Patel  
Andrew A. Paterna  
Ann M. Patterson  
Paul Maloney & Associates  
Christopher Paulin  
Jayne Pearson  
Joanne Peltier '96  
Linda M. Peretto  
Nicolas S. Perna  
Gail C. Perry  
Liv Perry '94  
Mary Lou Phillips  
Elaine Pilver '02  
Lila C. Pitek  
Karen A. Policastro  
The Polytechnic Club  
ON 20

Steven W. Pond '89  
Carol Pongetti  
J. Porter '91 '92 '01 '05  
Richard G. Posner  
John Post  
Jac R. Pringle  
Project Oceanology  
Susan M. Purdy  
Cheryl O. Putnam  
Quilibet  
Anita Rackow  
Thomas R. Radko  
Rodolfo Ramirez  
Edward Ramsdell  
Rhonda Ransom  
Paula J. Raum  
Nancy C. Raymond  
Susan Redman  
Kevin Regan  
Beth E. Reichert  
Reilly Basketball Clinic  
Rein's New York Style Deli  
Patricia A. Rejman  
Wayne L. Reynolds  
Constance Ricci '93  
Kevin C. Rice  
Sandra Rimetz  
Elizabeth Rivera  
Ellen J. Roach  
Mary C. Roche '81 '04  
Jolie A. Roche-Brown  
Rockledge Golf Club  
Daryl J. Rockwell '80  
Benjamin M. Rodgers '94  
Patricia C. Ronalter  
Norman Ross '89  
Francine Rosselli-Navarra  
Kendrick Roundtree  
Diane P. Rowe  
Geraldine M. Rozie  
Nancy A. Rozwadowski '00  
Ana Ruiz  
Joanne Russell  
Russell Sabadosa  
Daniel R. and Patty Sabia  
Salon Prodigy  
Sandra M. Salter  
Eszter J. Samodai  
Linda Samoncik  
Carolyn C. Samuelman  
Josephine Sánchez '95  
Frederick W. and Philomena M. Sawyer  
Jason Scappaticci  
Mark Schoen '95  
Rachel M. Schwartz  
Burton Schweitzer  
Grace Scollo '05  
Esther L. Sears  
Sandra Sears  
Michael A. Seaver '99  
Lisa M. Shackway '06  
Diana F. Sharon '91  
Ray Shearer  
Thomas P. Sheridan\*  
Fay M. Sherman  
ShopRite of Manchester  
Louis and Debra Siegel  
Bruce R. Sievers  
Silk City Wines & Liquors  
Jana Sime  
Barry Simmons  
Deborah Simmons  
Juanda Simmons '04  
Barbara Sines  
Paula Sistare  
Patricia A. Skinner  
Andrea M. Slusarz  
Eric D. Smith  
Gregory M. Smith  
Terrence G. Smith '98  
Thomas M. Smith '04  
John Sobczynski '07  
John G. Sommers  
Stephen S. Sottile  
Eugene J. Spaziani, Sr.  
Howard Stanton  
Gail Stanton-Hammond

Barbara J. Startup  
Michael Stefanowicz  
Nancy Steffens  
Fred and Eileen Stern  
Stewart Staffing Solutions  
Kelly Storey  
Patricia R. Strickland  
Patrick M. Sullivan  
Lewis Sumislaski '89 '96  
Joan E. Summers  
John Sutherland  
Ross and LaTasha Sutherland  
Paul Sutkaitis '97  
John B. Swanson  
Nancy B. Swanton  
Susan R. Sweatland  
Robert C. Symonds '99  
Jo Ann Szela '98  
Grace Talaga '94  
Gerald R. Tavernier, Jr.  
Thomas Hooker Brewing Company  
Ticket Network  
Negussie Tirfessa  
Jeremy Titus '94  
Toast Wines by Taste  
Rosalyn I. Toper '85  
Rebecca M. Townsend  
Richard J. Trachimowicz  
Thomas Trojan  
Sherwin Tucker  
Anne A. Turcotte  
Dorothy S. Tutthill '93  
Margaret A. Tuttle  
United Technologies Matching Gifts Program  
Jennifer Upton-Grayson  
Larissa O. Urquilla  
Ronald F. Usher  
Deborah E. Vachon  
Mary Ann Varga  
Veterans of Foreign Wars - Anderson Shea Post  
Sara M. Vincent  
Calvin Vinick  
Wadsworth Atheneum Museum of Art  
Joseph Wadsworth  
Joan Walden  
Barbara J. Walsh  
Robin L. Walters '89  
Theresa Waltz  
Kirk Walworth  
Shirley Warbeck  
Doreen W. Ward  
Marilyn J. Ward  
Jeanne C. Warren  
Cynthia Washburne  
Lisa Welch-Lankton  
Matthew D. Welle  
Pamela M. Wentworth  
Alfred P. Werbner  
Carrie White '95  
Elaine M. Wiatr '98  
Marianne H. Wilcox  
Dianne E. Williams  
Sonia M. Williams-Denham  
Colleen Williamson  
Willington Pizzo  
Willow Brook Golf Course  
Deborah Wilson  
Marc Wilson  
Marilyn Wilson  
Wine Spectator Magazine  
Wolff Insurance, Inc.  
Deborah Wood  
Worth Publishing  
Lolita A. Wynter '07  
Yale Peabody Museum of Natural History  
Yale Repertory Theatre  
Brittany L. Zavaski '03  
Maggie Zecchin  
Cynthia Zeldner  
Zhijiang Zhang  
Phyllis Zweifel '95

\* Deceased

## A Year of Giving



Top row from left to right: Timothy J. Devanney, Richard Meduski, Robert M. Annon, Jr., Martin Hart, Peter J. Karl, William J. McGurk and Gene Mazur; Lieutenant Governor Nancy Wyman and President Gena Glickman. Second row: Lucy A. Hurston and Gene Mazur; Holly Mann, Raymond Lefurge, Judy Keppner Clark, Michael Bars, William J. McGurk, Joseph Jeamel, Gena Glickman, Christopher Buchholz, Richard Trachimowicz and John Lund. Third row: SBM Charitable Foundation Building ribbon cutting ceremony. Scholarship recipients Khannie Homsombath and Jessica Rowe with Leslie Ann Brown. Fourth row: Martin Hart, Gene Mazur and Robert M. Annon, Jr.; Dr. Robert H. Fish and Meghan Spielman. Bottom row: State Senator Steve Cassano '68 (right) speaking to a guest at the Regional Economic Summit; Hans Weiss, Elizabeth W. Benavides and JoAnn Thulin congratulating a scholarship recipient.

## Calendar of Events:

### Donor Appreciation Dinner

Tuesday, September 27, 7:00 p.m.  
Culinary Arts Center, Lowe Student Services Center

### Cougar Classic Golf Tournament

Wednesday, September 28, 11:00 a.m.  
Manchester Country Club  
Register at: [www.mcc.commnet.edu/golf](http://www.mcc.commnet.edu/golf)

### David Foster and the Mohegan All Stars

Friday, October 14, 8:00 p.m.  
SBM Charitable Foundation Auditorium

### MCC Foundation Hall of Fame Reception

Tuesday, October 25, 6:00 p.m.  
Hans Weiss Newspace Gallery  
SBM Charitable Foundation Building

### Classical Cuisine Dinner

Monday, November 14, 7:00 p.m.  
Culinary Arts Center, Lowe Student Services Center

### Alumni Homecoming Dinner

Monday, November 21, 6:00 p.m.  
Culinary Arts Center, Lowe Student Services Center

### Regional Economic Summit

Friday, January 13, 2012, 7:45 a.m.  
SBM Charitable Foundation Building

### 20<sup>th</sup> Annual An Evening of Wine Wines

Friday, April 27, 2012, 7:00 p.m.

### Annual Report

Editors: Endia DeCordova, Martin Hart and Sara Vincent  
Layout & Design: Paula Raum  
Photographers: Brian Lombardo '95, Audrey Letizia, Ann Montgomery '96, TáShema Odoms, Paula Raum

### Office of Advancement and Community Engagement

Low Student Services Center, L202, Great Path, MS #6  
Manchester, CT 06045-1046

### Visit our website

[www.mcc.commnet.edu/foundation](http://www.mcc.commnet.edu/foundation)

For information on funding scholarships and endowment gifts, naming opportunities for campus spaces, establishing corporate partnerships, and the annual *An Evening of Fine Wines*, contact:

Endia DeCordova, Acting Associate Dean of Institutional Advancement  
Phone: 860-512-2902  
Email: [edecordova@mcc.commnet.edu](mailto:edecordova@mcc.commnet.edu)  
Sharon Mills, Administrative Assistant  
Phone: 860-512-2903  
Email: [smills@mcc.commnet.edu](mailto:smills@mcc.commnet.edu)

Every effort has been made to insure accuracy of donor gifts between July 1, 2010-June 30, 2011. Please contact the Office of Advancement and Community Engagement if information is missing.